



**GET TOGETHER**



**SHARE FOOD**



**PAY IT FORWARD**



**CORPORATE GUIDE**

# WHAT IS A BIG SOCIAL BITE?

**A Big Social Bite is a chance for you to come together with your teammates and colleagues, and share some great food with an important difference.**

By fundraising through your Big Social Bite, your organisation and amazing staff will be showing you care and be helping hundreds of people experiencing homelessness.

At your event, asks guests to 'Pay it forward.' Their donations will help Social Bite provide delicious meals for people experiencing homelessness and food insecurity.

Whether it's a coffee morning, breakfast meeting or summer office party, your Big Social Bite will raise awareness and funds to support the people who are most vulnerable in society.

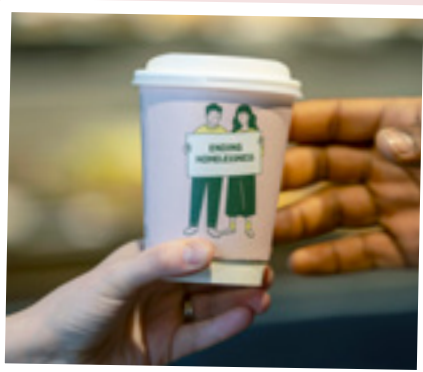


## IT'S MORE THAN A MEAL

We know that sharing food is one of the great things that brings you together with the people you care about. Our experience of working with and delivering free food to people experiencing homelessness has shown exactly the same thing.

By helping to fund these services, you'll not only be providing a much-needed meal, but also a welcoming environment, friendly conversation, and a pathway to ongoing support.

**So let's break the cycle of homelessness, one meal at a time.**



# LOOKING FOR INSPIRATION FOR YOUR BIG SOCIAL BITE?

You could hold a:



## Team lunch

Take a lunchtime break with colleagues to enjoy each other's company and support the mission to end homelessness



## Bring your own bakes

Ask each guest to bring their own creation and unleash their inner Bake Off Star Baker, for some friendly in-office competition



## Gourmet globetrotting

Ask colleagues to bring in dishes from across the world to celebrate and showcase different culinary and cultural delights



## Cosy comforts

Ask guests to bring in their favourite comfort food. It could be a family recipe passed down generations, or one of your unique (or peculiar!) go-to comfort foods that you come back to time and time again



## Coffee morning

Get together with colleagues to share a cup of coffee, some sweet treats and have a good natter



## Summer office party

Enjoy your company's summer event together with colleagues, and make it extra special by helping someone experiencing homelessness

# WHY A BIG SOCIAL BITE IS RIGHT FOR YOUR ORGANISATION



## FULLY ACCESSIBLE

From donations of £5 up to company-wide matched amounts, all contributions have a tangible impact for someone experiencing homelessness or food poverty.



## BUILDING TEAM CONNECTIONS

The perfect chance for your team to get to know each other better, as well as getting some time away from meetings and screens.



## SHOWING YOUR COMPANY CARES

An opportunity to demonstrate your organisation and staff's commitment to breaking the cycle of homelessness.



## ACROSS THE WHOLE OF THE UK

We distribute free food through our chain of coffee shops and our network of charity partners all across the UK, so you'll know your Big Social Bite can create real change in your local community.



*Team Social Bite were happy to lead by example! We shared our favourite sandwiches at a team lunch.*

# HOW TO GET STARTED

## STEP 1:

### Plan your Big Social Bite

Choose what kind of event you'd like to hold – you can select one of our suggested ideas or come up with your own. Pick a date, time and venue that suits you.



#### Looking to bring your teams together with a Big Social Bite?

Why not hold parallel events across your office or site locations, so everyone across your business is getting involved at the same time.

## STEP 2:

### Create your fundraising page

[Create a Big Social Bite fundraising page on Just Giving](#)

so that your guests can easily pay it forward online.

Prefer to collect cash on the day? See our cash donation guide later in this pack for details on how to do this.



## STEP 3:

### Invite your guests

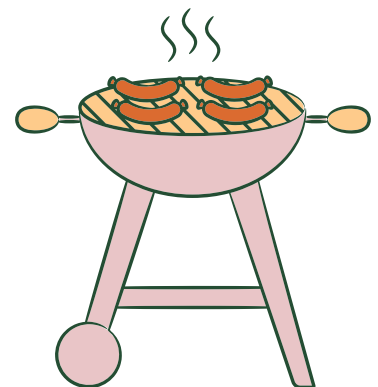
Make sure to let them know what your theme is if they need to bring a dish, and send them a link to your fundraising page so they can make their donation.



## STEP 4:

### Get together

Have your Big Social Bite and enjoy getting together, sharing delicious food and having an amazing time, all whilst helping to provide free food and long-term support to people in a situation of homelessness.



#### Here's some suggested copy for sharing your Big Social Bite on your internal comms channels:

*"We're supporting the mission to end homelessness with a Big Social Bite! Please come along to [location] on [date] at [time] to share [food] and pay it forward with a donation to our charity partner, Social Bite."*

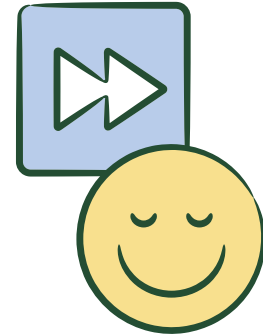
*Social Bite provides homes, jobs and food to help people break the cycle of homelessness, and we're pleased to support this mission with our event."*

# WHAT IS 'PAYING IT FORWARD'?

## **Paying it forward is to pass on an act of kindness to someone else.**

At Social Bite, paying it forward is at the heart of everything we do. It all started more than 10 years ago with inviting customers in our first coffee shop to pay it forward at the till and cover the cost of a hot drink or a meal for someone experiencing homelessness.

Now in addition to our chain of coffee shops and daily services, paying it forward helps people across the UK. In addition to our own services, we also partner with grass-roots organisations to provide free food for people who are homeless and vulnerable in communities nationwide.



**Paying it forward is central to our work at Social Bite. It's only thanks to the kind donations and fundraising from amazing supporters like you that we're able to open our doors five days a week to provide free food, food poverty, or who are in a vulnerable situation.**

The rising cost of living is driving more people across the UK into situations of homelessness and food insecurity, so your support is needed more than ever.

Social Bite provided over 165,000 items of free food and drink to people in need over the last 12-month period. Your fundraising will help Social Bite continue to provide free food as well as supporting our other long-term projects that break the cycle of homelessness.

Every £5 you raise could help provide a meal for someone living in a situation of homelessness.



# TAKE YOUR FUNDRAISING TO THE NEXT LEVEL

## ALL DONATIONS WELCOME

**You can ask everyone to support your event, whether they're attending your Big Social Bite or not!**

We know it's possible that some colleagues won't be able to make it on the day, but they can still Pay it Forward with a donation if they'd like to support the cause.

### SET A TARGET

**Aim high for your Big Social Bite! Remember all of your fundraising supports Social Bite to provide meals for people in need, as well as supporting our long-term projects that break the cycle of homelessness.**

Did you know that fundraising pages that set targets raise on **average 17% more** than those without?

See our ['What Your Fundraising Can Achieve' section later in this guide](#) for further inspiration on setting your target.

## COLLECTING DONATIONS ONLINE FROM TEAM MEMBERS ACROSS YOUR COMPANY

**[Set up your JustGiving fundraising page](#) to easily collect donations online from all of your guests.**

We recommend that you personalise your page with your photos and updates, to keep colleagues up-to-date about your event. You could include information like a menu, or what guests should bring along.

All donations collected on JustGiving come directly through to us at Social Bite so all you need to do is set up your page!

Once your page is set up, you can access your unique QR code that links directly to your page. You could print off a copy of this to display at your event and catch any last minute donations.

# COLLECTING CASH DONATIONS

We know that some people prefer to donate in person, so here's how to collect cash at your Big Social Bite.

## BEST CASH COLLECTION PRACTICES

- Have an obvious donation point at your Big Social Bite. This could be large A4 envelopes, a collection bucket, cash tin, or a collection bowl. Make it clear and obvious where people can donate.
- Make sure to always keep your cash collection in a secure and visible place during your Big Social Bite.
- You should have a tent card or sign next to your donation point that clearly states who the funds are being raised for (Social Bite) and our registered charity number (SC045232). [Download our handy printable tent card for this.](#)
- Ask someone to help you count the cash after the event to make sure you have the correct total, which you can share with all your guests.

## HOW TO PAY IN YOUR CASH DONATIONS

Once you have collected all of your cash donations you can pay this into us directly by following our [paying In process](#).

If you have a cheque to send, you can post this to:

Big Social Bite Team  
Social Bite  
1 Leith Walk  
EH6 8LN

Please include a covering letter with your cheque to let us know that the donation is from your Big Social Bite fundraising event. We also ask that you include an email or postal address, so we can confirm we've received your cheque.

If you would prefer to make payment via a bank transfer, please email [community@social-bite.co.uk](mailto:community@social-bite.co.uk) to request our account information.

**Please do not send cash through the post.**

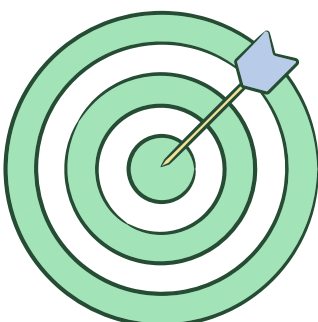


# WHAT YOUR FUNDRAISING CAN ACHIEVE

All funds raised from your Big Social Bite will contribute towards the mission to end homelessness.

If you're looking for inspiration on what to aim for with your fundraising target, take a look at some of the milestones you could aim for.

<b>Every £5 you raise could</b>	provide a meal to someone experiencing homelessness
<b>Raising £50 could</b>	provide a meal for 10 people experiencing food poverty
<b>Raising £150 could</b>	fund the sit-in supper for one session of our Glasgow women's group
<b>Raising £250 could</b>	cover the cost of a mixed sit-in supper at our Aberdeen coffee shop
<b>Raising £450 could</b>	provide one meal a day for someone experiencing homelessness for up to three months
<b>Raising £1,000 could</b>	provide a hot breakfast for every person who uses Social Bite's free food services in Scotland for one week
<b>Raising £2,500 could</b>	cover the cost of delivering Social Bite's free food services in Edinburgh, Glasgow and Aberdeen for a week



Setting yourself an ambitious target is a great way to drive donations. Ask each guest to Pay it Forward with a donation of what they can afford. We would recommend suggested donation amounts of £5, £10, or £20.

# Good food for a good cause

*"Food and drink are a tool of engagement, and without it people might not know about the wider services and support we offer."*

– Euan, Social Bite Development & Support Worker

## **Social Bite offers a daily free food service from each of our coffee shops.**

We offer a breakfast service providing hearty filled rolls and hot drinks, and an afternoon takeaway service, including hot and cold meals, snacks and drinks. In addition, we offer sit-in suppers, which are weekly opportunities for people who are experiencing homelessness or food poverty to dine together, eat a delicious meal and enjoy some good company and a sense of community.

For someone who lives in temporary accommodation, who may not have access to cooking facilities or communal areas for socialising, weekly sit-in meals offer a place to go that's warm, lively and welcoming. Regular attendees form relationships with each other, Social Bite staff and support workers. It's an opportunity for a chat and to catch up.



# THE POWER OF PAYING IT FORWARD

**An insight from Social Bite Support & Development worker Euan who helps to run our free food services in Glasgow**

“People who attend the service at Social Bite come from many different situations. It can be from rough sleeping or living in temporary or emergency accommodation. Or it could be they’ve just got their own permanent flat but haven’t got any white goods in place yet.

Some people are at risk of becoming homeless soon. This can be for a variety of reasons but sadly is becoming more common, what with rising living costs, increases in energy prices, and the cost of putting food on the table. Many people are living in food poverty and struggling to see the end of the month, even though they’re housed and employed.

It doesn’t matter what someone’s circumstances are – we don’t ask. Everyone is welcome at Social Bite.

Paying it forward is a huge help with Social Bite’s work. On the surface, it simply allows us to provide hot food and drinks to people who need it. But the food and drink are a tool of engagement, and without it people might not know about the wider services and support we offer.”



Social Bite opens our coffee shops five days a week for our free food services including Christmas Day. As well as this we run bespoke sit-in services, including restaurant dining, women only suppers, and LGBTQIA+ suppers for people who are vulnerable or experiencing homelessness.

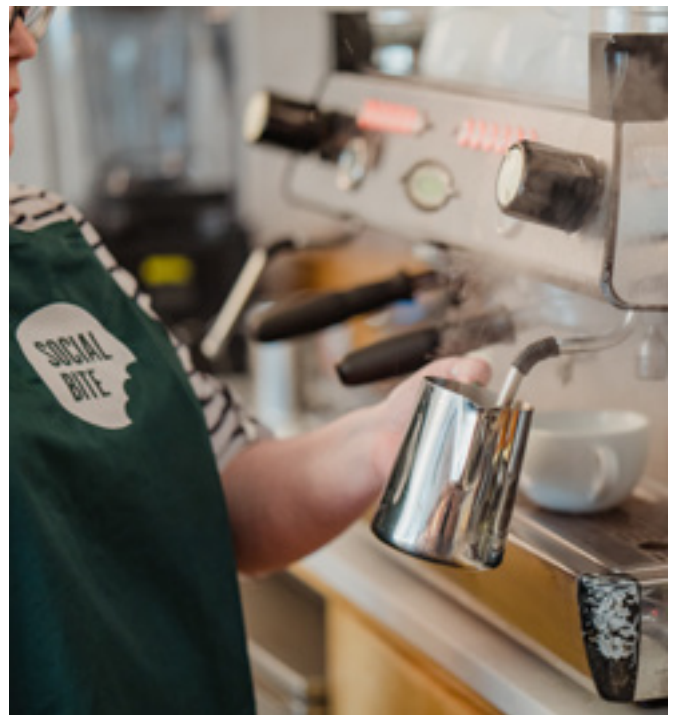
# HELPING TO PROVIDE HOMES, JOBS, FOOD AND SUPPORT

As well as providing free food, your fundraising will also help support our longer-term projects that work to break the cycle of homelessness for good.

## JOBS FIRST

Social Bite's Jobs First programme focuses on providing real job opportunities to people who have experienced homelessness.

We work with some of the UK's biggest employers to match vacancies to candidates with a background of homelessness. Our team of dedicated Social Bite Support Workers provide continuous support and guidance for both employer and employee from application to interview and then throughout employment.



## SOCIAL BITE VILLAGES

Our Social Bite Village in Edinburgh is an innovative alternative to unsuitable temporary accommodation for people experiencing homelessness.

Residents of the village live in purpose-built Nest Houses with experienced support workers onsite. Residents are empowered with the skills, knowledge and support needed to build an independent life, secure stable employment and sustain future permanent tenancies. Plans are underway to build two further villages in the next 24 months.

## GET IN TOUCH

If you have any questions about holding a Big Social Bite, please reach out to your dedicated Social Bite contact, or you can get in touch with the team at [partnerships@social-bite.co.uk](mailto:partnerships@social-bite.co.uk)

### FAQs

Please see our list of [Frequently Asked Questions](#)

For information on taking part as an individual or with family and friends, please contact the team at [community@social-bite.co.uk](mailto:community@social-bite.co.uk)

If you are a school or community group looking to take part in the Big Social Bite, contact our community fundraising team [community@social-bite.co.uk](mailto:community@social-bite.co.uk)

Thank you for joining  
the movement  
to end homelessness



[social-bite.co.uk](https://social-bite.co.uk)

The Social Bite Fund –

Registered Charity Number: SC045232